



SUBMITTAL

TYPE: SSA ASME PRE-CHARGED SURGE ARRESTOR TANKS
MODELS: SSA 35 TO SSA 800L

Submittal Sheet No. SSA-2021A

Date: 02/21

JOB _____	AA tanks Representative _____
Unit Tag No. _____	Order No _____ Date _____
Engineer _____	Submitted By _____ Date _____
Contractor _____	Approved By _____ Date _____

DESCRIPTION

AA tanks Type SSA Tanks are ASME replaceable bladder type pre-charged hydro-pneumatic tanks for commercial, industrial, municipal and well water systems, to effectively control water hammer shock, and pump start-up/shut-down water surge. The vessels are fabricated between 125 PSI and 500 PSI rating with a large water system connection designed to accept potentially harmful water surge pressures quickly, with minimal pressure drop.

CONSTRUCTION

Shell: Carbon Steel
(Available in 304 / 316 Stainless Steel)
External Finish: Primer
(Can accomodate specified coatings)
System Connection: Epoxy Coated Carbon Steel
(Available in 304 / 316 Stainless Steel)
Level Gauge: Available upon request
Bladder: Heavy Duty Butyl
(NSF Certified / FDA Approved Materials)

PERFORMANCE LIMITATIONS

Maximum Design Pressure: 125 To 500 PSIG
Maximum Design Temperature: 240°

Model Number	Tank Volume (Gallons)	Tagging Information	Quantity
SSA 35	10		
SSA 50	13		
SSA 85	23		
SSA 130	35		
SSA 200	53		
SSA 300	79		
SSA 400	106		
SSA 500	132		
SSA 600	158		
SSA 700	185		
SSA 800L	211		

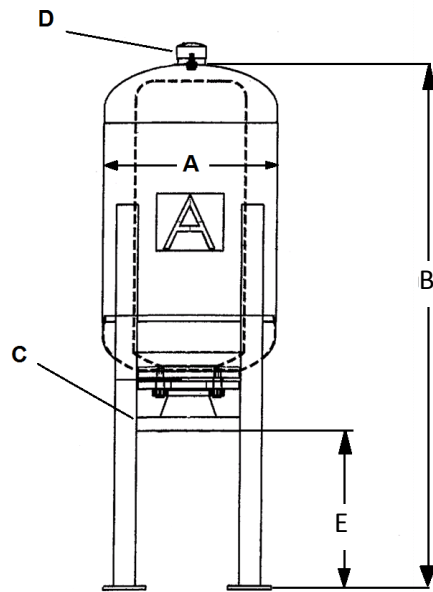
TYPICAL SPECIFICATION

Furnish and install, as shown on plans, a _____ gallon _____" diameter X _____" (high) pre-charged surge arrestor tank with heavy-duty butyl bladder. The tank shall have NPT, flanged or grooved system connections and a 0.302"-32 charging valve connection (standard tire valve) to facilitate the on-site charging of the tank to meet system requirements. The tank must be constructed in accordance with most recent addendum of Section VIII Division 1 of the ASME Boiler and Pressure Vessel Code.

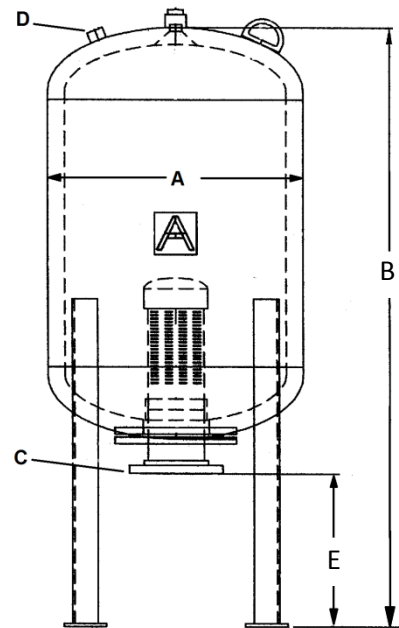
Each tank shall be AA tanks model number SSA-_____ or approved equal.

25110 THOMAS DR • WARREN, MI 48091 • (586) 427-7700 • (586) 427-7895 FAX • www.aatanks.com





SSA 35 & SSA 50



SSA 85 to SSA 800L

DIMENSIONS & WEIGHTS

Model Number	Tank Volume Gallons	Dimensions in Inches					Approx. Shipping Weight (lbs)
		Diameter	OAL	System Connection	Charging Valve	E	
		A	B	C	D		
SSA 35	10	12	39	2 ½	0.302" -32NC	12	63
SSA 50	13	14					74
SSA 85	23	16	46	3			116
SSA 130	35	20					135
SSA 200	53	24	52	4			250
SSA 300	79						64
SSA 400	106	30	58				430
SSA 500	132		65 ½				525
SSA 600	158	73 ½	6	640			
SSA 700	185	79		749			
SSA 800L	211	32		84	760		

NOTES:

- Tanks are factory pre-charged to 30 PSI and field adjustable.
- G-Grooved Pipe / F-Flanged / NPT system connection available.
- Available with base ring.
- "E" Dimension adjusted to spec
- All SSA tanks are built to order.